

## blis-online

### The new management platform for commercial sites

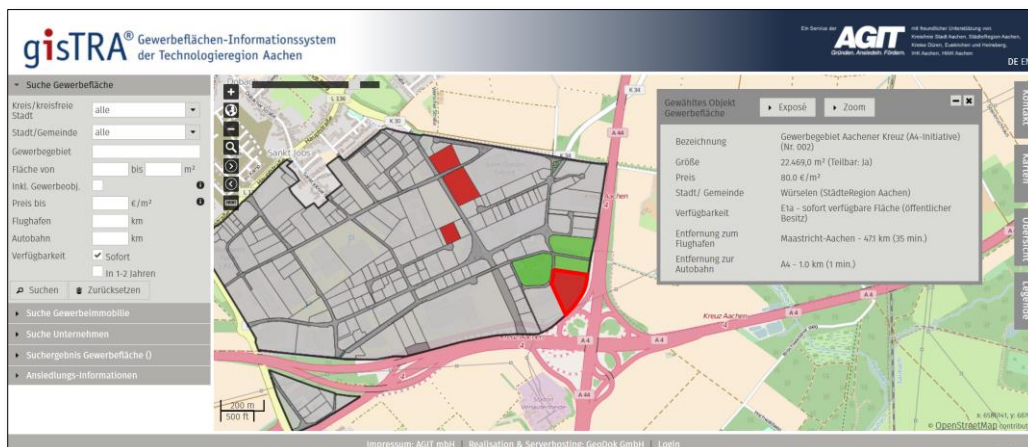
**blis-online stands for “Business Location Information System” and offers a modular system for marketing, monitoring and managing commercial sites and real estate.**

**blis-online’s** attractive appearance conceals a powerful and comprehensive planning and management tool-box for both, business promoters and planners. Over 100 German and international clients benefited so far from blis-online’s innovative approach.

**Facing today’s complex challenges of commercial site development, blis-online provides the following added values:**

- ✓ Plot-based presentation (map and criteria-oriented)
- ✓ Site balance sheets on demand (e.g. current, short-term and mid-term available plots)
- ✓ screening of new potential sites
- ✓ support in reusing brownfields
- ✓ monitoring of sales and enquiries
- ✓ overview of settled businesses and regional clusters
- ✓ prognoses and demand assessments as a basis for regional spatial planning
- ✓ internal CRM-system of potential investors and businesses
- ✓ automatic reminder function
- ✓ commercial real estate management and (on request) cooperation with real estate agents and commercial real estate portals (e.g. ImmobilienScout24 in Germany)
- ✓ online interfaces to local, regional and national government portals
- ✓ standardized interfaces to (geo)information of a wide variety of governmental and commercial sources
- ✓ App for mobile devices

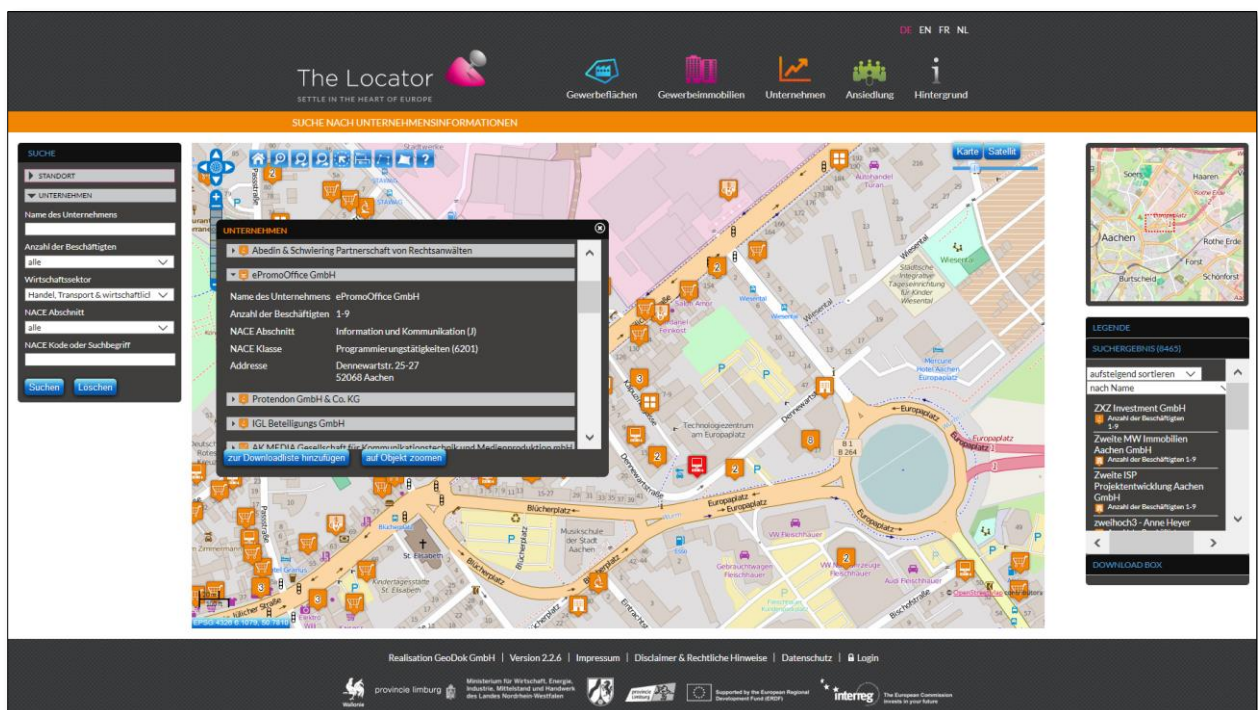
**blis-online is modern, cloud-based, modular, flexible, easy to personalize and integrate and immediately ready-to-use.** Our ‘data-at-the-source’ approach avoids parallel and isolated structures as well as multiple duplications. For the client this means a truly cost-efficient and integrated solution.




Role model for a regional business portal created via blis-online (including regional and municipal subsidiaries) **gisTRA® – Gewerbeflächen-Informationssystem der Technologieregion Aachen** ([www.gistra.de](http://www.gistra.de)).

„The Locator“ is the first comprehensive cross-border location information system in Europe. It was developed as part of an INTERREG project and combines two GeoDok platforms, namely gisTRA on the German and REBIS on the Dutch side of the joint national border, as well as two other regional systems from Belgium.

**From project to product:** Many modules from **The Locator** have already been incorporated into blis-online ([www.the-locator.eu](http://www.the-locator.eu)):



## Contact details

|   |   |
|---|---|
|  | <p><b>GeoDok GmbH</b></p> <p>Jürgen Dressel (CEO)</p> <p>phone +49 (0)521 98 68 -84<br/> e-mail <a href="mailto:j.dressel@geodok.de">j.dressel@geodok.de</a><br/> internet <a href="http://www.geodok.de">www.geodok.de</a></p> |
|---|---|